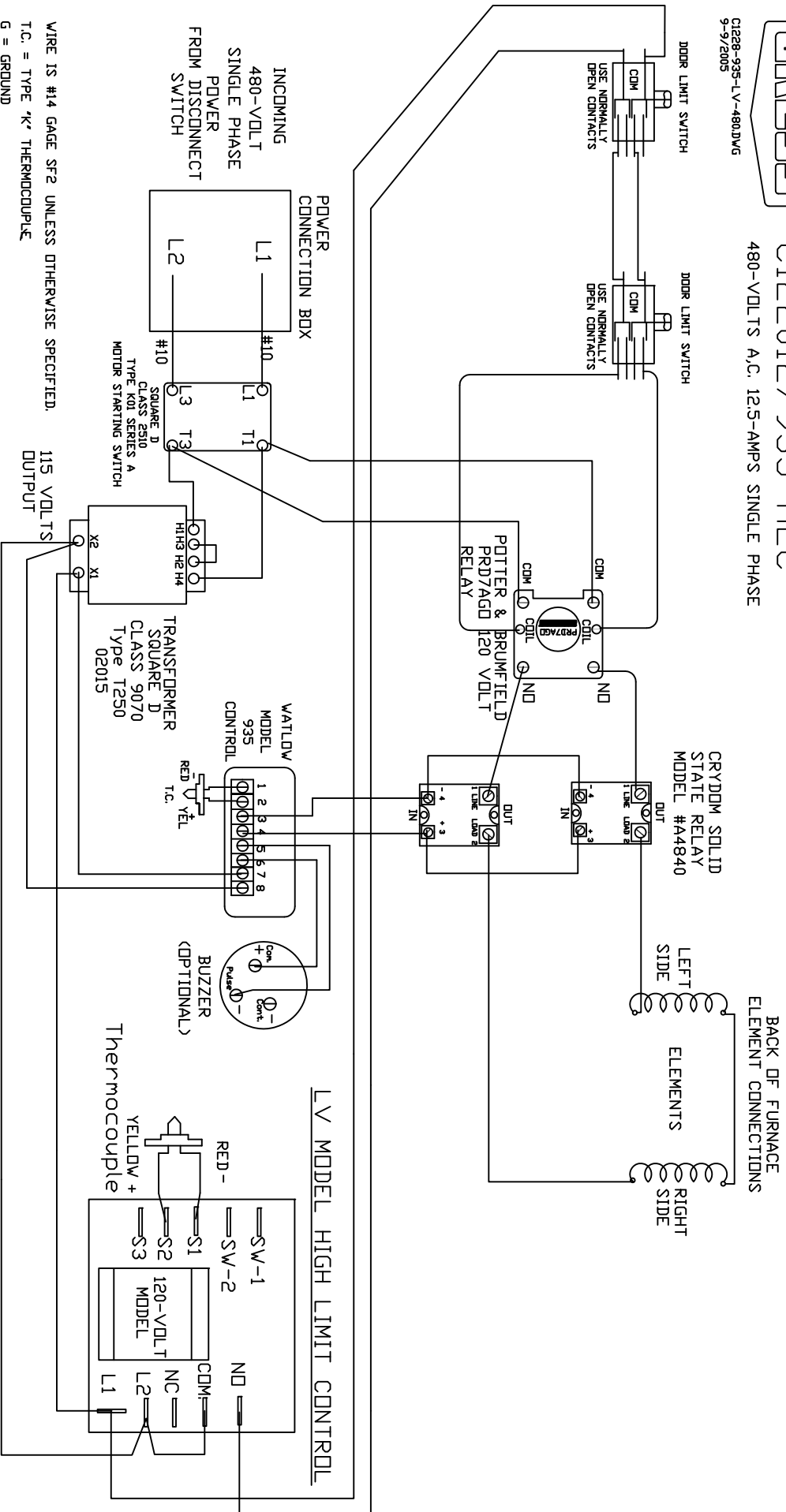


C1228-935-LV-480DV6  
9-9/2005

# C1228/935-HLC C122012/935-HLC 480-VOLTS A.C. 12.5-AMPS SINGLE PHASE



WIRE IS #14 GAGE SF2 UNLESS OTHERWISE SPECIFIED.  
 T.C. = TYPE 'K' THERMOCOUPLE  
 G = GROUND